

LOW PROFILE LED BEACON

FLEET

Part #	Lens	Vdc	Amps	Lumens	SAE	Mounting	# Patterns
200ZM-12V-A	Amber	12-80	0.5	456	Class 2	MM	3



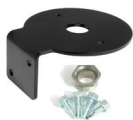
Features

- SAE J845 (2013) Class 2 performance
- Polycarbonate lens, powder coated die cast base
- Fully encapsulated electronics for rugged durability against vibration and moisture
- User selectable flash patterns; single (60 FPM), double (107 FPM) or quad (160 FPM)
- Colour stable light output (no red shifting)
- **4 Year Warranty**

Recommended Mounting Solution

(sold separately)

98008



Dimensions

