

DROID LED BEACON WIRING INSTRUCTIONS

- This product contains an internal fuse, which will automatically reset in the event of a short circuit or power spike.
- All customer extension wires should be of the proper gauge as shown in the table below. They should be fused at the battery with proper fuses and **never** with circuit breakers.

Wiring

- If your light is **supplied with a switch**, ignore the following wiring and use instructions that came with the switch.
- If your light has a **GREEN wire**, follow the wiring instructions on Page 1.
- If your light **does not have a GREEN wire**, follow the wiring instructions on page 2.
- If your light is a Magnetic Mount Version, see information on page 2.

Wire Colour	Wire Gauge	Wire Function
Red	18-20 AWG	Positive
Black	18-20 AWG	Ground
Green	22 AWG	Pattern Select
Violet	22 AWG	Dimming
White	22 AWG	i-Network
Blue	22 AWG	Master/Slave

Quick Wiring Table

Wire:	Red	Black	Green	Violet	White	Blue
Feature						
Power	Connect to Positive (+)	Connect to Negative (-)	****	****	****	****
Pattern Select	****	****	Touch to Negative or Positive	****	****	****
Dimming						
AutoDim	****	****	****	Connect to Positive (+)	****	****
Manual Dim ♦	****	****	****	Connect to Negative (-)	****	****
i-Network						
Master	****	****	****	****	Connect to other White Wires	****
Slave (Synchronized) ♦ ♦	****	****	****	****	Connect to other White Wires	Connect to Positive (+)
Slave (Alternating)	****	****	****	****	Connect to other White Wires	Connect to Negative (-)
i-Battery Monitor	****	****	****	****	****	****
(Factory Installed)						

♦ Manual Dim requires an external switch. When activated the light will dim.



SWS - WARNING SYSTEMS INC.

7695 Blackburn Pkwy • Niagara Falls • Ontario • L2H 0A6 • Canada
 Phone: 905.357.0222 • Toll Free: 1.877.357.0222 • Fax: 905.357.9122
 Web: www.SWSCanada.com

*We Manufacture and
 Service What We Sell !*
 #300098_RevE

DROID LED BEACON WIRING INSTRUCTIONS

Split Colour Wiring

Wire Colour	Wire Gauge	Wire Function
Red	18-20 AWG	Positive
Black	18-20 AWG	Ground
Yellow	22 AWG	Colour Select Amber
Violet	22 AWG	Colour Select Blue
White	22 AWG	i-Network
Blue	22 AWG	Master/Slave

Quick Wiring Table

Wire:	Red	Black	Yellow	Violet	White	Blue
Feature						
Power	Connect to Positive (+)	Connect to Negative (-)	****	****	****	****
Colour Select	****	****	Hold to Positive (+)	Hold to Positive (+)	****	****
i-Network						
Master	****	****	****	****	Connect to other White Wires	****
Slave (Synchronized) ◆ ◆	****	****	****	****	Connect to other White Wires	Connect to Positive (+)
Slave (Alternating)	****	****	****	****	Connect to other White Wires	Connect to Negative (-)
i-Battery Monitor (Factory Installed)	****	****	****	****	****	****



SWS - WARNING SYSTEMS INC.

7695 Blackburn Pkwy • Niagara Falls • Ontario • L2H 0A6 • Canada
 Phone: 905.357.0222 • Toll Free: 1.877.357.0222 • Fax: 905.357.9122
 Web: www.SWSCanada.com

*We Manufacture and
 Service What We Sell !*
 #300098_RevE

DROID LED BEACON WIRING INSTRUCTIONS

Features and Operation

Pattern/Colour Select:

- The GREEN wire allows you to select amongst a number of different flash patterns. If there is no GREEN wire present, the VIOLET wire controls the blue light and the YELLOW wire controls the amber light.
- To scroll up through the patterns, momentarily touch the GREEN wire to the RED (POSITIVE) wire. To scroll down through the patterns, momentarily touch the GREEN wire to the BLACK (GROUND) wire. If there is no GREEN wire, hold the VIOLET or YELLOW wires to the positive.
- A momentary switch kit will allow you to cycle down through patterns only, for lights equipped with a GREEN wire (switch 766163, in kit 766170)
- If you have a magnetic mount light, the pattern can be selected by using the momentary switch on the cigarette cord to cycle down through the patterns.

Dimming:

- Magnetic Mount lights and lights **not** equipped with a GREEN wire, have no dimming feature.
- The VIOLET wire allows the dimming. If you are not using the dimming feature, isolate and stow away the violet wire.
- To use the AutoDim feature, connect the VIOLET wire to the RED (POSITIVE) wire. The internal sensor will be activated and automatically adjust the light output when darkness is detected.
- To manually dim the light, connect the VIOLET wire to the BLACK (GROUND) wire. This should be done via a switch.

i-Battery Monitor

The Intelligent Battery Monitor is a factory-installed feature that will detect the voltage across your vehicle's battery. If your battery's voltage goes below 11.5V, the light will switch to a unique alert pattern prompting you to start your vehicle to charge your battery. Once the battery goes above 11.8V, the light will resume its previous operation

Intelligent Network

- Magnetic Mount lights do not have the ability to connect to the i-Network.
- Minibars cannot be set to communicate.
- The BLUE and WHITE wires are used for the Intelligent Network to synchronize up to 16 lights. If the light is to operate independently or if there is only one light present, these wires can be stowed away for future use if desired.
- Choose a master. The master light will control the features of itself and all slaves in the network (dimming, pattern select etc.) to make the light a **master**, connect its WHITE wire with all other WHITE wires.
- To make the light a **slave**, connect its WHITE wire with all other white wires and isolate and stow away its other wires as the light will take the pattern select and dim commands (where applicable) from the master light.
- To make the slave light **synchronize**, connect its BLUE wire to the RED (POSITIVE) wire.
- To make the slave light **alternate**, connect its BLUE wire to the BLACK (NEGATIVE) wire.



SWS - WARNING SYSTEMS INC.

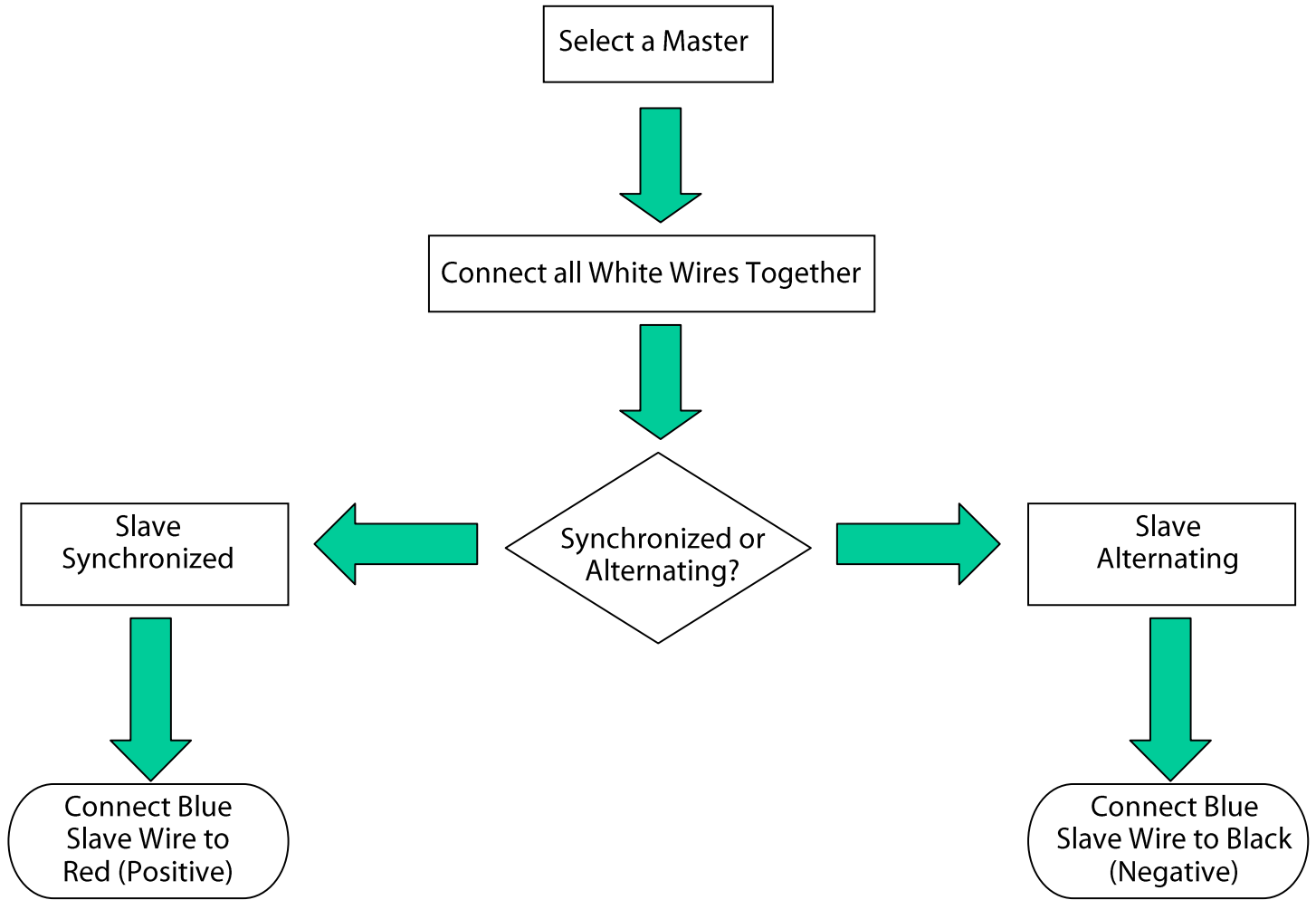
7695 Blackburn Pkwy • Niagara Falls • Ontario • L2H 0A6 • Canada
Phone: 905.357.0222 • Toll Free: 1.877.357.0222 • Fax: 905.357.9122
Web: www.SWSCanada.com

*We Manufacture and
Service What We Sell !*

#300098_RevE

DROID LED BEACON WIRING INSTRUCTIONS

i-Network Wiring



SWS - WARNING SYSTEMS INC.

7695 Blackburn Pkwy • Niagara Falls • Ontario • L2H 0A6 • Canada
Phone: 905.357.0222 • Toll Free: 1.877.357.0222 • Fax: 905.357.9122
Web: www.SWSCanada.com

*We Manufacture and
Service What We Sell !*
#300098_RevE